

### Input data

System of measurement		Metric
Input type		Coupling for electric motor
Input speed	[rpm]	1400
Output speed	[rpm]	35
Ratio (i=)		40
Frequency	[Hz]	50
Input options		IEC
Requested input power	[kW]	0.37
Service factor		1.1
Rated Power P1	[kW]	0.41

### Output data

#### Gear unit **F RT 50 B3 40 71 B14 AC 24**

Type		RT - Worm speed reducers
Input type		F (Elastic coupling)
Size		50
Ratio (i=)		40
Input flange		B14
Input speed	[rpm]	1400
Output speed	[rpm]	35
Rated output torque	[Nm]	64.61
Service Factor		1.1
Efficiency		0.64
Inertia moment	[kgm <sup>2</sup> ]	0.000047

#### Gear unit configuration

Output shaft		Hollow output shaft
Fixing		Universal
Version		B3

#### Output radial and axial loads

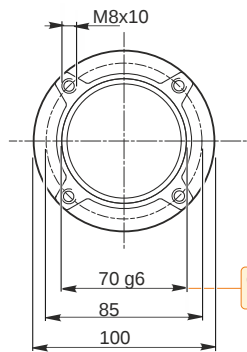
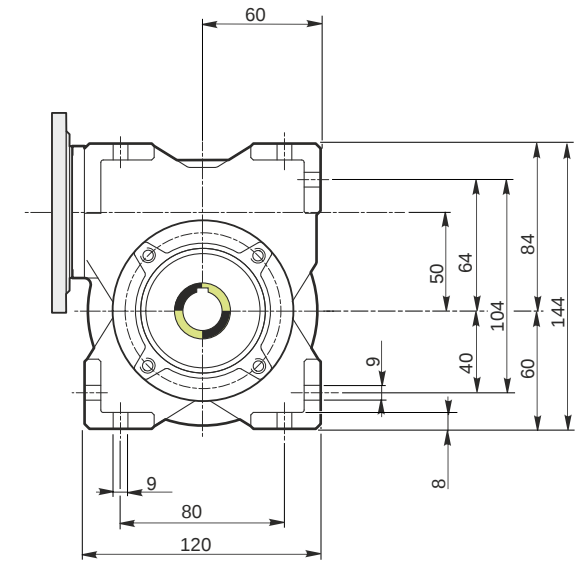
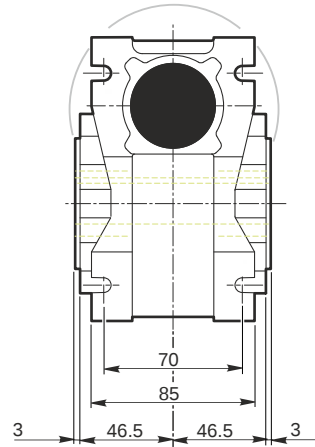
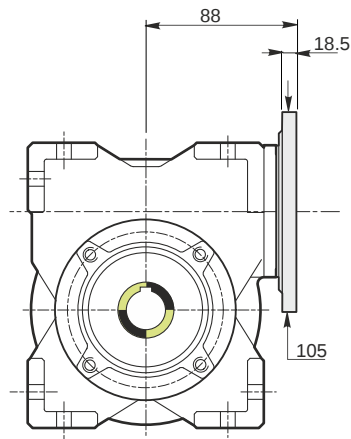
Ball bearings output radial load	[N]	2300
Taper bearings output radial load	[N]	3400
Ball bearings output axial load	[N]	460
Taper bearings output axial load	[N]	680

#### Accessories

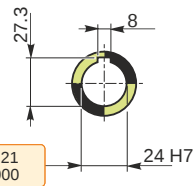
Hollow output shaft		AC 24
---------------------	--	-------

#### Electric motor coupling

Size		71 B4
Poles n.		4
Power	[kW]	0.37

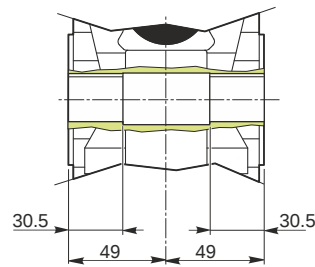


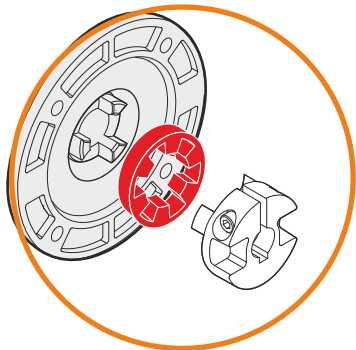
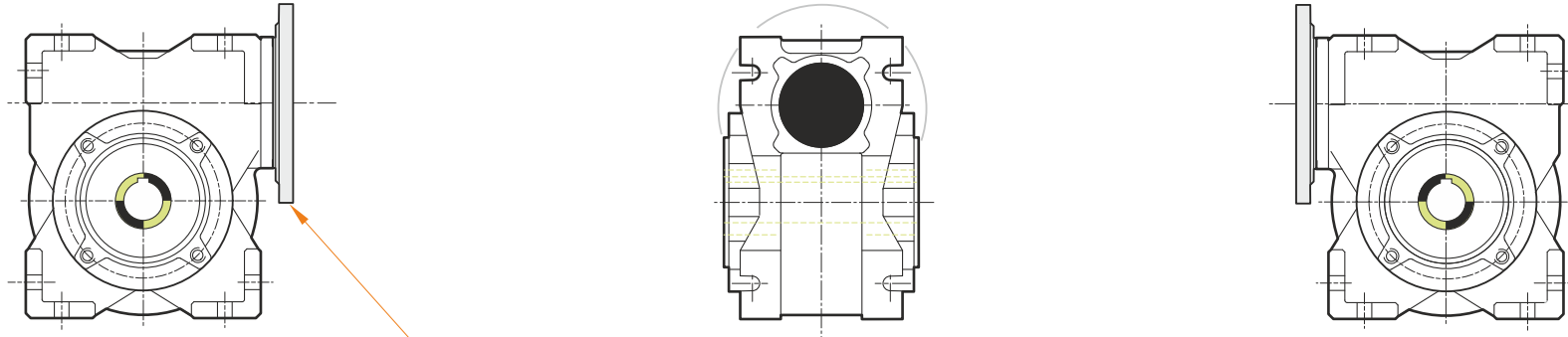
Hollow output shaft



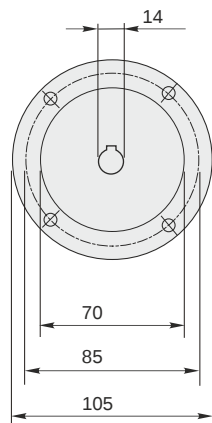
69.99  
69.971

24.021  
24.000



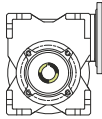


This gear unit is provided with an elastic coupling motor fitting

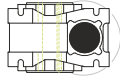


**Mounting positions**

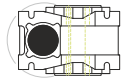
**B3**



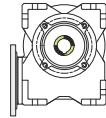
**B6**



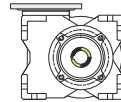
**B7**



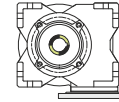
**B8**



**V5**



**V6**



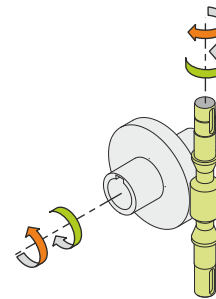
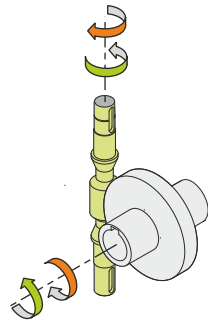
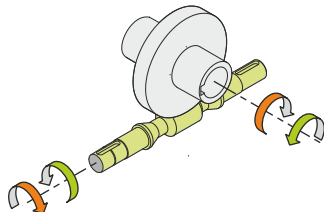
0.13



← Oil quantity [litres]

Lubricant type: Long life synthetic oil ISO VG320

**Direction of rotation**



**Weight**

Gear unit [kg] 3.8

**Gearing data**

Axial module	1.9
Number of starts	1
Lead angle	4° 31'
Pressure angle	20°

**Backdriving**

Static self-locking  
Slow back-driving in case of vibrations  
Low dynamic back-driving